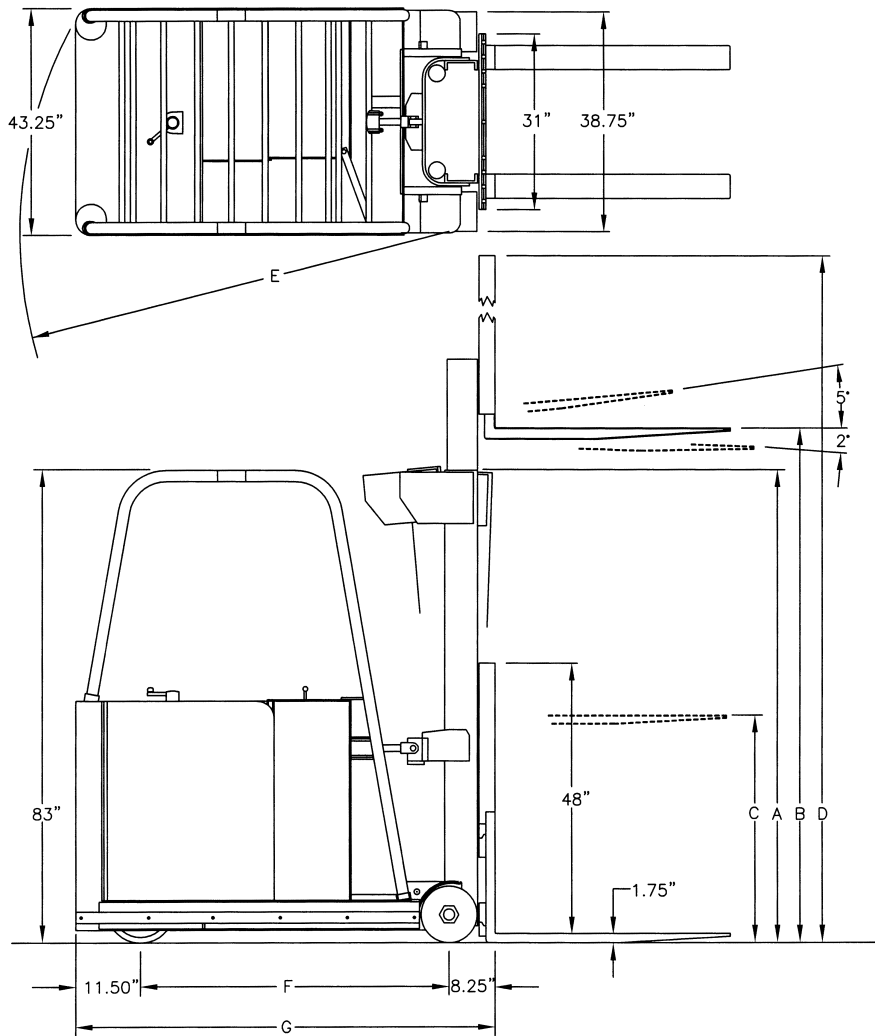


gregory Model RC-EX

Rider Counterbalanced Explosion Proof Truck Specifications for 3,000 lb. and 4,000 lb. Capacities



Standard Mast Specifications (inches)

Mast Type	(A) Collapsed Height	(B) Maximum Fork Height	(C) Free Lift	(D) Overall Extended Height
Duplex	77	115.5	52.9	163.5
	83	127.5	58.9	175.5
Triplex	71	152	46.9	200
	77	170	52.9	218
	83	188	58.9	236
	87	198	62.9	246
	89	202	64.9	250
	95	216	70.9	264

Standard Capacity Specifications (inches)

Capacity (lb.)	(E) Turning Radius	(F) Wheelbase	(G) Overall Length	Equal Intersecting Aisle	Right Angle Stacking
3,000	78	55	74.75	80	86.25 + Load
4,000	83	61	80.75	86	91.25 + Load

★ Contact the Excalibur Equipment Sales Department for custom requirements or other mast specifications.

Classified to U.S. and Canadian Safety Standards by Underwriters Laboratories Inc. for Use in Class I, Divisions 1 & 2, Groups C & D; Class II, Divisions 1 & 2, Group G; and Class III, Divisions 1 & 2 Hazardous Environments.



Rider Counterbalanced Explosion Proof Truck

General Information	Manufacturer	Excalibur Equipment, LLC
	Model	Gregory RC3EX and RC4EX
	Capacity	RC3EX - 3,000 lb. at 24" Load Center RC4EX - 4,000 lb. at 24" Load Center
	Rating	UL Classified Explosion Proof
	Power	24 Volt Electric
	Electric Controls	Transistorized, Solid State Infinitely Variable Programmable Speed, Acceleration and Plugging Capabilities
	Hydraulic Controls	Point of Action Electric / Hydraulic Infinitely Variable
	Motors (Drive, Lift, Power Steering)	Heavy Duty Explosion Proof with Class "H" Insulation, UL Classified
	Power Steering	Hydrostatic
	Forks (Bronze Covered)	Class II 1.75 x 4.25 x 42 Other Sizes Available
	Truck Weight (Less Battery)	4,725 lb. (RC3EX), 4,825lb. (RC4EX)
Paint	Safety Yellow	
Dimensions	Specifications and Mast Options Shown on Front	
Performance	Maximum Travel Speeds	4.8 mph Empty, 4.0 mph Loaded Programmable
	Lift / Lower Speeds	Standard: 65 / 60 fpm Empty 45 / 65 fpm Loaded Duplex Hi-Free Lift: 55 / 40 fpm Empty 40 / 60 fpm Loaded Triplex: 55 / 60 fpm Empty 40 / 90 fpm Loaded
	Gradeability	10%
Chassis	Wheels, Drive	(2) 12" x 3.5" Static Conductive Rubber
	Wheels, Load	(2) 10" x 7" Rubber
	Brake	Deadman Foot Pedal
	Underclearance	2.25" Standard Higher Ramp Underclearances Available
Battery and Charger Requirements	Battery Type	UL Classified Explosion Proof
	Battery Capacity	500 Amp Standard - 620 Amp Available
	Battery Compartment	11.25" x 25.6" x 34.5" Side Removal
	Battery Weight	985 lbs.
	Charger Connector	N2106 Explosion Proof

Excalibur Equipment produces a complete line of specialized Material Handling Equipment. Continuous improvements in safety, performance and durability assure customers of a quality forklift designed to meet their specifications.

All vehicles are furnished with UL mandated safety devices and under no circumstances should these devices be removed. Gregory products and specifications are subject to improvements and changes without notice and obligation on prior purchases.

Standard Features

- 24 Volt System
- Battery Discharge Indicator w/ Lift Interrupt
- Sight Glass
- Battery Roller Tray
- Bronze Anti-Spark Package
- Electric Horn and Back-Up Alarm Package
- Emergency Power Disconnect
- Hourmeter
- Hydrostatic Power Steering
- Internal Mast Reeving
- Load Backrest
- Overhead Guard
- Static Conductive Drive Tires
- Transistorized Controls

Optional Features

- Epoxy Paint
- Hand Held Analyzer
- Hydraulic Attachments
- On/Off Key Switch
- Remote In-Environment Charging Station
- Stainless Steel Construction
- Strobe Light

Gregory EX Trucks are Classified to U.S. and Canadian safety standards by Underwriters Laboratories Inc. for use in **Class I, Divisions 1 & 2, Groups C & D; Class II, Divisions 1 & 2, Group G; and Class III, Divisions 1 & 2** Environments.

All Gregory EX trucks are classified by UL to the following Standards for Safety:

UL 583
Electric-Battery-Powered Industrial Trucks

UL 1203
Explosion Proof and Dust-Ignition-Proof
Electrical Equipment for Use in
Hazardous (Classified) Locations

UL 1604
Electrical Equipment for Use in Class I
and Class II, Division 2, and Class III
Hazardous (Classified) Locations

EXCALIBUR EQUIPMENT, LLC

285 Eldridge Road Fairfield, NJ 07004-2508
phone: (973) 808-8399 fax: (973) 808-8398
www.exequipment.com
sales@exequipment.com